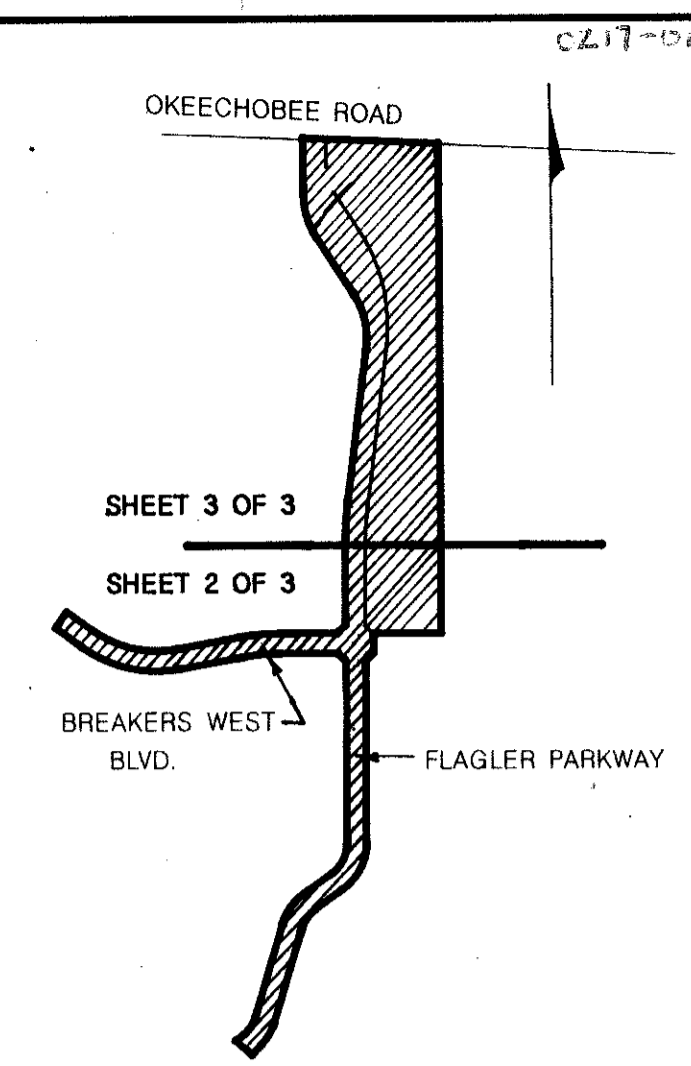


BREAKERS WEST PLAT NO. 17

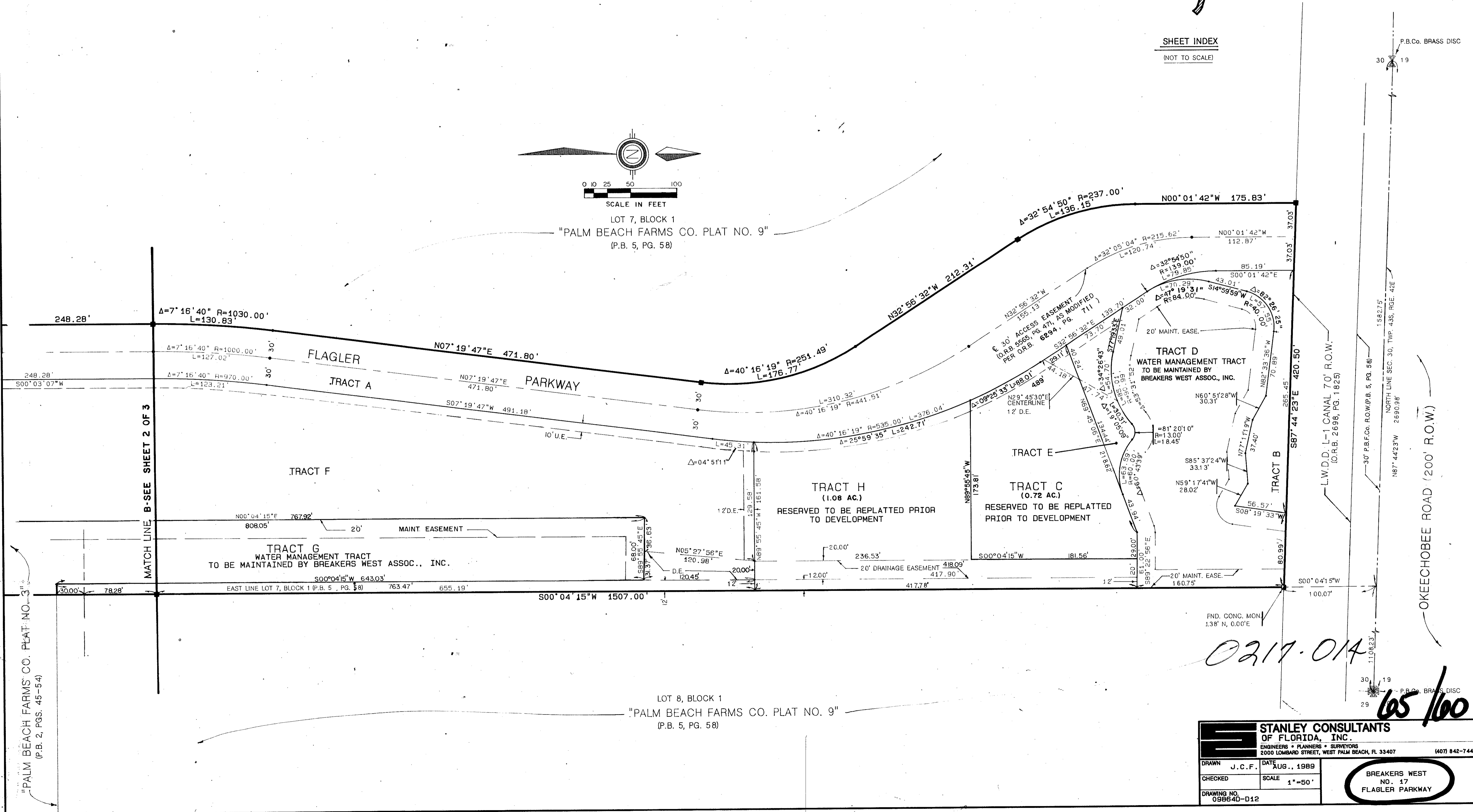
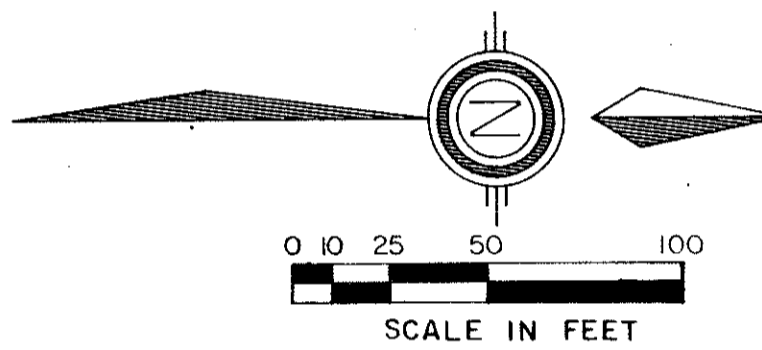
FLAGLER PARKWAY "PART OF A PLANNED UNIT DEVELOPMENT"
 BEING A REPLAT OF A PORTION OF TRACT 1, BLOCK 1, AND TRACTS 2 AND 3, BLOCK 2,
 PALM BEACH FARMS COMPANY PLAT NO. 3 (P.B. 2 PG. 45-54) AND
 A PORTION OF LOT 7, BLOCK 1, PALM BEACH FARMS COMPANY PLAT NO. 9, (P.B. 5 PG. 58.)
 SITUATE IN SECTION 30, TOWNSHIP 43 SOUTH, RANGE 42 EAST,
 PALM BEACH COUNTY, FLORIDA

JANUARY, 1990

SHEET 3 OF 3



STATE OF FLORIDA
 COUNTY OF PALM BEACH
 THIS PLAT WAS FILED FOR
 RECORD _____ DAY OF _____
 AD, 1990 AND DULY RECORDED
 IN PLAT BOOK _____ ON PAGES
 _____ AND _____
 JOHN B. DUNKLE, CLERK
 BY: _____, D.C.
 CIRCUIT COURT SEAL



SUBDIVISION OF BREAKERS WEST PLAT NO. 17
 BOOK 65 PAGE 60
 FLOOD HAZARD MAP 150A
 ZONING RS
 0000 46
 88 73-219
 FIND NAME

0217-01A

65/100

STANLEY CONSULTANTS OF FLORIDA, INC.	
ENGINEERS • PLANNERS • SURVEYORS 2000 LOMBARD STREET, WEST PALM BEACH, FL 33407 (407) 842-7444	
DRAWN J.C.F.	DATE AUG., 1989
CHECKED	SCALE 1"=50'
DRAWING NO. 09864D-012	

BREAKERS WEST NO. 17 FLAGLER PARKWAY